

SYNCHRONIZED INGROUND TELESCOPIC JACK - 2 STAGES



CUSTOMER'S INFORMATION:

COMPANY NAME : _____

TEL : _____

DATE : _____

EMAIL : _____

PROJECT/REFERENCE : _____

JACK DATA :

Capacity (Pound) : _____ Car Weight (Pound) : _____

Speed (Ft/Min) : _____ Travel (In) : _____

Twin Single New
 Vic NPT Male NPT Female

Existing :

Ø PISTON (A) _____ Rupture Valve : Yes No
 Ø CASING (E) _____ NPT
 Ø OIL INLET _____ Buffer & Springs : Yes No
 Ø GPM _____ New Pit Channel : Yes No
 Static Pressure (PSI) _____ Follower Guide

POWER UNIT DATA :

TYPE : DRY SUBMERSIBLE

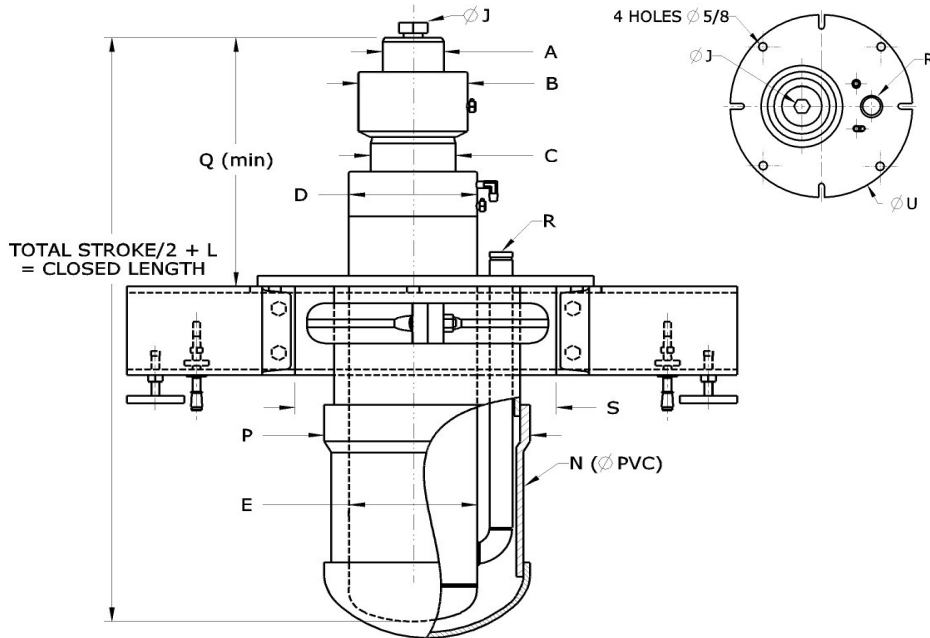
START : 80 120

MOTOR VOLTAGE : 220/1/60 208/3/60 230/3/60
 460/3/60 575/3/60 OTHER : _____

OPTIONAL ACCESSORIES DESIRED :

Ball valve Oil heater
 Thermal block Oil cooler
 Pressure negative switch Thermistor
 Insulating coupling Drip pan
 Line strainer Scavenger pump
 Temperature regulator
 Controller mount
 Anti-vibration pad

OTHER : _____



TOTAL STROKE/2 + L
= CLOSED LENGTH

A	B	C	D	E	J	L	N	P	Q	R	S	U
Ø PISTON	Ø HEAD	Ø PISTON	Ø HEAD	Ø CASING	Ø BOLT	DEAD LENGTH (IN)	Ø PVC	Ø PVC RING	SUPPORT POSITION	Ø OIL INLET	PIT CHANNEL OPENING	SUPPORT
1 1/2 SP	3	2	4	3	1/2 NC	18	8	9 1/4	13	3/4 NPT	15	18 3/4
1 1/2	3 1/2	2 5/8	4 1/2	3 1/2	1/2 NC	19	8	9 1/4	13	3/4 NPT	15	18 3/4
1 3/4	4	2 3/4	5	3 3/4	3/4 NC	19 1/2	8	9 1/4	13	3/4 NPT	15	18 3/4
2	4	2 7/8	5	4	3/4 NC	21 1/2	10	11 1/2	14	2 VIC	20	23 3/4
2 SP	4 1/2	3 1/2	5 1/2	4 1/2	3/4 NC	23 1/2	10	11 1/2	14	2 VIC	20	23 3/4
2 1/2	5	3 3/4	6	5	1 NC	26	10	11 1/2	14	2 VIC	20	23 3/4
3	5	4	6 1/2	5 1/2	1 NC	27	12	13 5/8	14	2 VIC	20	23 3/4
3 SD	5 1/2	4 5/8	7	6	1 NC	27 1/2	12	13 5/8	14	2 VIC	20	23 3/4
3 1/2 SP	6 1/2	5 1/2	8	7	1 1/4 NC	30	12	13 5/8	14	2 VIC	20	23 3/4
4	7	5 3/4	8 1/2	7 1/2	1 1/4 NC	31	14	15	14	2 VIC	23	26 3/4
4 1/2	7	6	8	8	1 1/4 NC	32	14	15	14	2 VIC	23	26 3/4
5	7 1/2	6 1/4	9	9	1 1/4 NC	34	16	17	14	2 1/2 VIC	23	26 3/4
5 SP	8 1/2	7 1/2	10	10	1 1/4 NC	38	16	17	14	2 1/2 VIC	23	26 3/4
5 1/2	7 1/2	6 1/2	9 1/2	9 1/2	1 1/4 NC	36	18	19 1/4	14	2 1/2 VIC	28	32
6	9	8	11	11	1 1/4 NC	39	18	19 1/4	14	2 1/2 VIC	28	32

IMPORTANT :

BOT : _____ TOT : _____

STANDARD BOT AND TOT	0/25 FEET/MINS		26/50 FEET/MINS		51/75 FEET/MINS		76/100 FEET/MINS		101/125 FEET/MINS		126/150 FEET/MINS		151/200 FEET/MINS	
TELESCOPIC 2 STAGES	BOT	TOT	BOT	TOT	BOT	TOT	BOT	TOT	BOT	TOT	BOT	TOT	BOT	TOT
RECOMMENDED VALUE	4"	6"	8"	10"	10"	12"	10"	12"	10"	14"	10"	14"	12"	20"
MINIMUM VALUE	2"	4"	4"	6"	6"	9"	8"	10"	8"	10"	8"	10"	10"	12"

NOTES _____